

The background is a dark teal color. On the left, there is a circular inset showing a bouquet of flowers in a glass vase. On the right, there is a circular inset showing a cityscape with a large dome, likely St. Paul's Cathedral in Valletta, Malta. The word "Weddings" is written in a large, white, serif font across the center.

# Weddings

TIGNÉ POINT, SLIEMA

c



# THE MAJESTIC VIEW OF VALLETTA

Across the creek from Chophouse has often been described by 18th Century Grand Tour travellers as, “One of the finest views in Europe”.

The spacious timber – decked terrace at Chophouse gives one the feeling of being on an ocean liner, high above the water sailing into port.

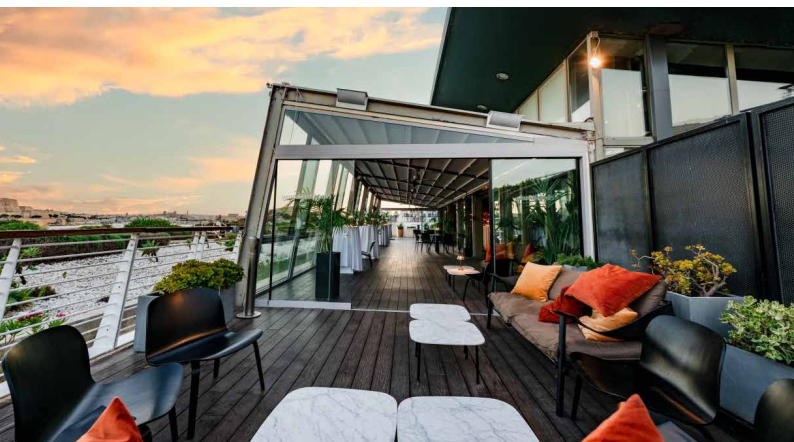
The magnificent, uninterrupted view of Valletta across the sea not only provides the perfect back drop for happy photographs but also the idyllic ambience for our guests to relax with.





THE SPECIAL FEELING OF BEING AT CHOPHOUSE IS FURTHER ENHANCED BY THE TRANQUIL EFFECT OF CHOPHOUSE BEING SITUATED IN A CAR FREE ZONE.

Our spacious terrace is backed up by a large internal area, a section of which has parquet flooring which is ideal for dancing. This inside area is fronted by large 20-foot-high glass windows, ensuring that even in adverse weather the view of Valletta can still be enjoyed.



WE OFFER A LARGE AND VARIED SELECTION OF MENUS FOR SEATED DINNERS AND STAND-UP PARTIES

and we are always happy to tailor the menu to our guest's specific requests and requirements, matching their tastes and budgets.

All our staff are experienced, professionally trained and committed to our ethos of ensuring a pleasant experience for each and every guest in the best traditions of hospitality.



THE CONVENIENT PARKING AT “THE POINT” CLOSE BY IS ANOTHER GREAT ADVANTAGE OF CHOPHOUSE

In bad weather conditions guests can walk along the well-marked underground passageway straight to our elevator which will whisk you up into Chophouse. Alternatively, should guests park outside, there is access from the steel staircase which leads to the Piazza, some 50 meters away from the restaurant.

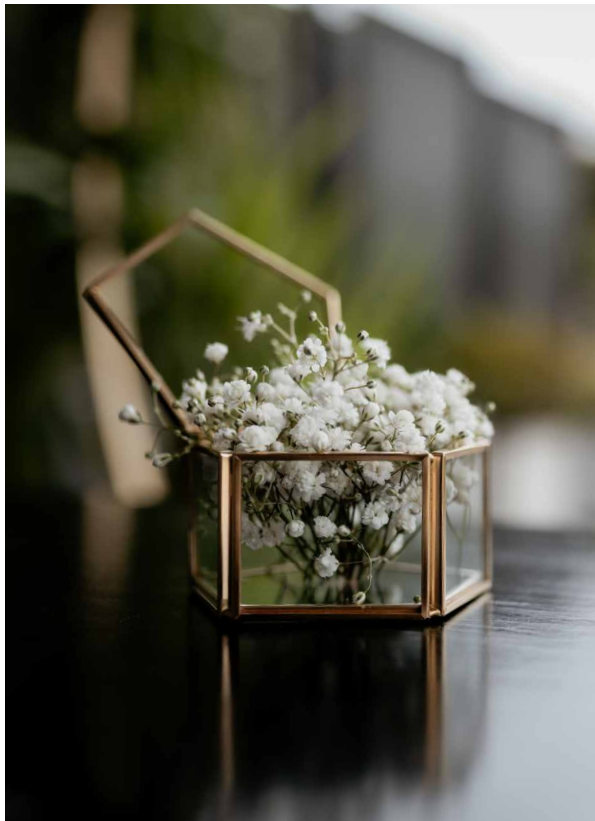
In good weather the bride and groom can be stopped either below the belvedere by the steel staircase or at the Midi entrance in Censu Scerri Street which leads to the Piazza. In case of bad weather, the bridal car and the accompanying cars proceed to the underground tunnel where there is a car passage which leads to an elevator which takes you directly to the restaurant.



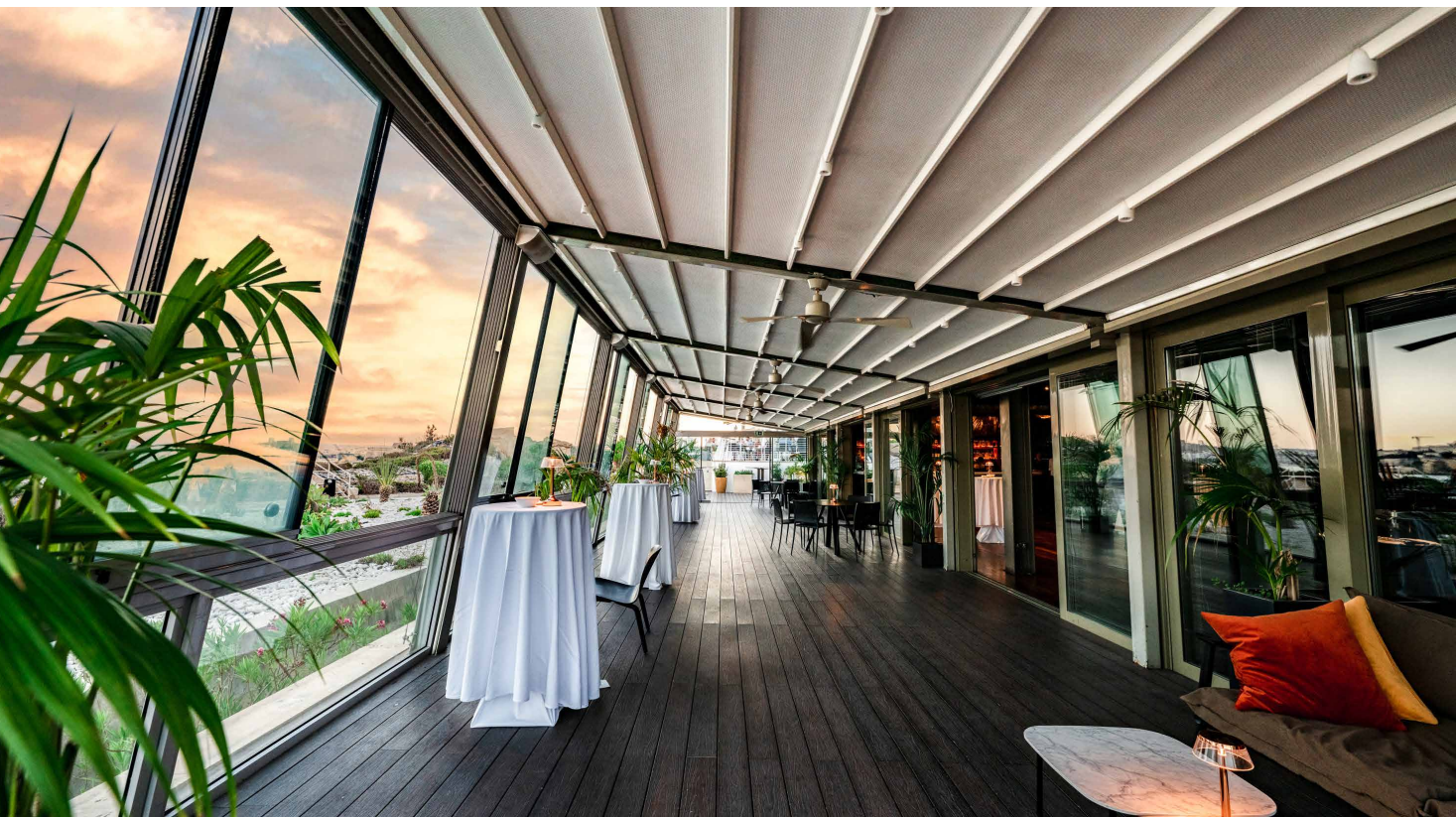
The venue cost for a wedding at Chophouse

Year	2026	2027	2028
Price	€2250	€2500	€2750

- Cloakroom facilities are available at €150.
- We can dress up the terrace windows with white sheers and decorate the handrail with fairy lights for an additional €200 each.
- Live entertainment is permitted; however, music volume is controlled in order to respect neighbours.
- Chophouse can seat 180 people, of which 84 are on the terrace - closed with glass in the winter months. Standing capacity using both indoors and outdoors is 300.









CHOPHOUSE IS  
LICENSED BY THE PUBLIC  
REGISTRY OF MALTA

to conduct civil weddings on  
the premises. The charge is  
of €350. The couple must of  
course make the necessary  
arrangements some weeks  
before the ceremony with  
the Public Registry office.  
We are happy to guide you.







All staff costs are included for the standard duration of a wedding reception of 5 hours. A minimum overtime charge of € 250 per hour per 100 guests is charged thereafter.

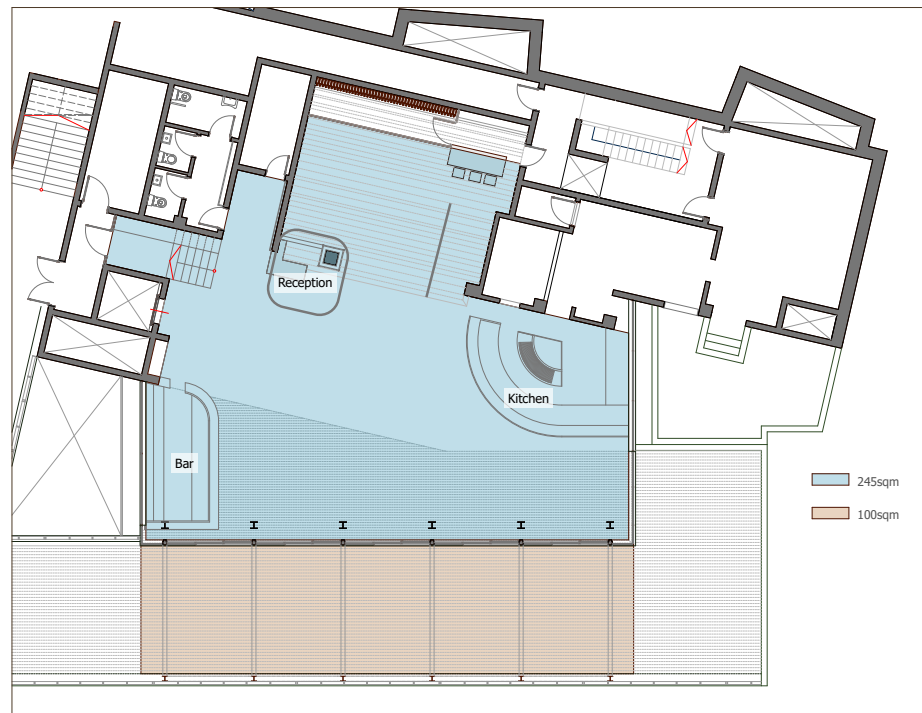
For the duration of the wedding reception a duty manager will be present to make sure that all goes smoothly. Any queries and/or requirements on the night are to be directed to them.

Maltese law requires one security officer per 100 guests during the reception, incurring a cost of €25 per hour per security personnel.

A non-refundable deposit of €1,500 is required to secure the date. 75% of the balance is requested one week before the wedding. The remaining balance would need to be settled one week afterwards.



## CHOPHOUSE RESTAURANT AREAS PLAN





# chophouse

*The Perfect Wedding Venue*

KEITH MIFSUD

+356 99864994

[keith.mifsud@kitchenconcepts.com.mt](mailto:keith.mifsud@kitchenconcepts.com.mt)